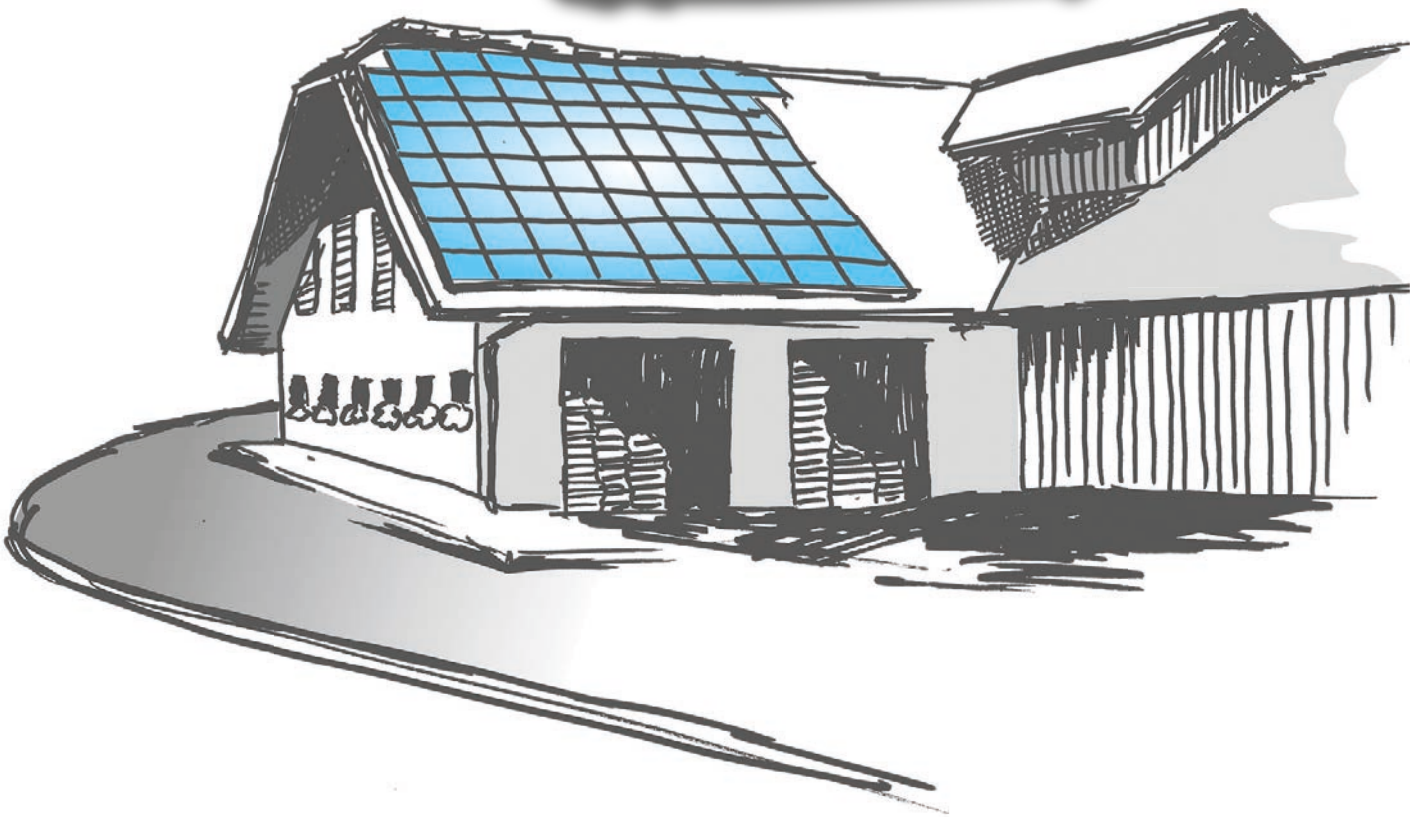


SolarMax MT-Series

The all-rounder for trade and industry

3phase (8-15 kW)



SolarMax MT-Series

3phase (8-15 kW)

Specifications



		8MT2	10MT2	13MT2	15MT2	13MT3	15MT3
Input values	MPP-voltage range ¹⁾	300 ... 750 V	290 ... 750 V	370 ... 750 V	430 ... 750 V	280 ... 750 V	320 ... 750 V
	Control range	250 ... 750 V					
	Minimum DC-voltage	250 V					
	Maximum DC-voltage	900 V					
	Maximum DC-current	1 x 18A/1 x 9A	2 x 18 A	2 x 18 A	2 x 18 A	3 x 16 A	3 x 16 A
	Number of MPP-Trackers	2				3	
	Max. PV generator output power per MPP tracker	MPPT1: 9.000 Wp MPPT2: 5.000 Wp	9.000 Wp				
	Number of string connections	1 x 2 / 1 x 1	2 x 2			3 x 2	
Connection type	MC 4						
Output values	Rated output power ²⁾	8.000 W	10.000 W	13.000 W	15.000 W	13.000 W	15.000 W
	Maximum apparent output power ²⁾	8.000 VA	10.000 VA	13.000 VA	15.000 VA	13.000 VA	15.000 VA
	Maximum AC current	3 x 12 A	3 x 16 A	3 x 20 A	3 x 22 A	3 x 20 A	3 x 22 A
	Nominal mains voltage	3 x 400 V					
	Mains nominal frequency / range	50 Hz / 45 Hz ... 55 Hz					
	Power factor cos (φ)	Adjustable from 0,8 overexcited to 0,8 underexcited					
	Distortion factor at rated output power	< 3 %					
	Connection type	Connector (locking)					
	Grid connection	Three phase (L1 / L2 / L3 / N / PE)					
	Power input at night	0 W					
Efficiency	Max. efficiency	98,0 %					
	Euro efficiency	97,5 %					
Ambient conditions	Protection class	IP65					
	Ambient temperature range (for rated power output)	-20°C ... + 60°C (+50°C)					
	Relative humidity	0 ... 98 % (condensation)					
	Maximum operating level above sea level	2.000 m (without derating)					
	Fire protection	According EN 62109-1/ -2					
	Noise emissions (1,5 m)	51 dBA (fan off) / 58 dBA (fan on)					
Configuration	Display	LC graphics display with backlighting and status LED					
	Circuit type	Two-stage, transformerless					
	DC disconnect	Integrated					
	Data logger	Data logger for Energy yield, peak output, and operating duration of the last 31 days, 12 months, 10 years.					
	Fault current monitoring	Internal, AC/DC sensitive					
	Casing	Aluminium					
	Overvoltage conductor DC	Requirement class C (VDE 0675-6) and/or type 2 (EN 61643-11)					
	Overvoltage conductor AC	Requirement class D (VDE 0675-6) and/or type 3 (EN 61643-11)					
Standard & guidelines	EMC	EN 61000-3-2 / EN 61000-3-3 / EN 61000-3-11 / EN 61000-3-12 / EN 61000-6-2 / EN 61000-6-3					
	Grid connection	VDE 0126-1-1 A1:2012 / VDE-AR-N 4105 / BDEW MS-Richtlinie / G59/2 / CEI 0-21 / CEI 0-16 / RD 1699 G83/2 / PPC Guide / C10/11 / EN 50438 / AS 4777					
	Device safety	EN 62109-1/ -2					
Interfaces	Data communication	RS485 / Ethernet					
	Status signaling contact	M12 connector with relay as N/C contact / N/O contact					
	Connection ripple control signal receiver	With MaxRemote					
	Connection external grid monitoring	M12 Connector					
Weight & Dimensions	Weight	39 kg			42 kg		
	Dimensions (W x H x D)	550 x 750 x 200 mm					
Warranty	Standard warranty	5 years					
	Warranty extensions	to 10, 15, 20 or 25 years					

¹⁾ For AC rated power output
²⁾ Certifications are not available for all models.

All rights, amendments and errors reserved

